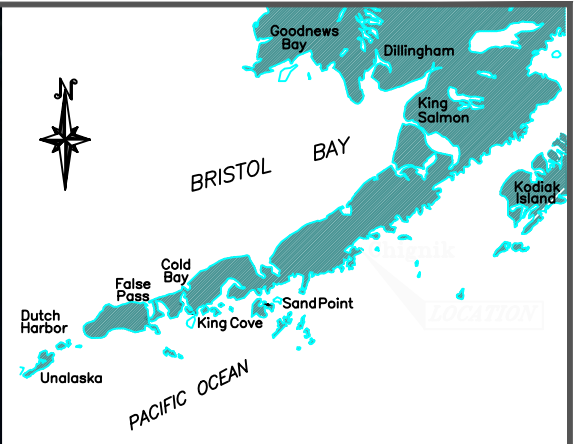
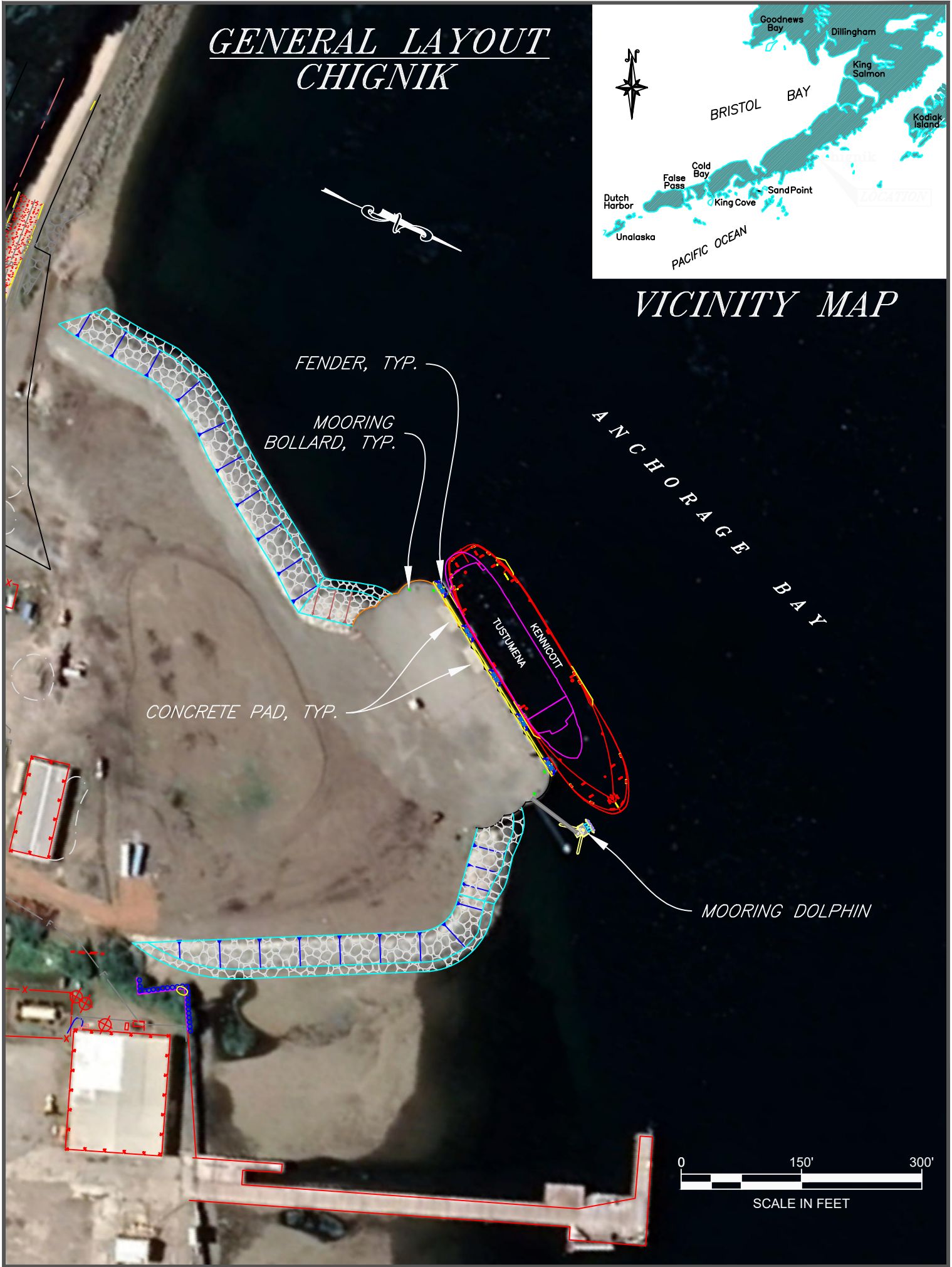


# GENERAL LAYOUT CHIGNIK



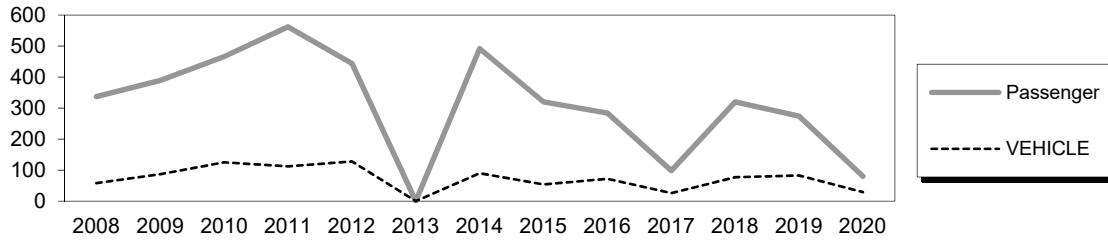
## VICINITY MAP



# Chignik Dock

**Owner:** Lake and Peninsula Borough  
**Terminal Manager:** City of Chignik 907-749-2280

**Terminal Description:** The M/V TUSTUMENA docks at the newly built City Dock in Chignik during its May through September Aleutian Chain trips. The City Dock is an open-cell sheet pile bulkhead structure with steel pin-pile fender units and a mooring dolphin. The dock was built in 2017 and is connected to a 5-acre approach lot. The dock face is 282-ft long with five (5) fender units along its seaward face. The past 12 years of total passenger and vehicle traffic at Chignik is shown below. Chignik had no ferry service in summer 2013 while the M/V Tustumena was in the shipyard for repairs. The global pandemic caused the decline in 2020.



The most recent above water inspection occurred on July 27, 2020. No underwater inspections have been performed at this facility.

Vessels	
Name	Berthing, Alignment
Tustumena	Starboard

Tidal Data	
Highest Observed	10.2
MHHW	8.9
MHW	8.1
MLLW	0.0
Lowest Observed	-3.4

Terminal Building
This facility does not have a terminal building.

Generator & Building
This facility does not have a generator on-site.

Utilities @ Dock
There are no utilities at the City Dock.

Uplands	
Short-Term Parking:	N/A
Long-Term Parking:	N/A
Staging Area:	N/A
Paint Striping:	No
Driving Surface:	Gravel

Chignik City Dock	
Type:	Open-cell sheet pile bulkhead, 282' seaward dock face
Year Built:	2017
Dock Support:	N/A
Sheetpile Coating:	Galvanized
Fenders:	Five (5) pin-pile fender units
Lighting:	None
Condition:	New
Design Live Load:	1000 psf uniform surcharge

Dolphins						
Dolphin	Dolphin Piles	Fender Face	Anodes	Built	Cond.	Notes
N1	2B, 1V	None, mooring only	Yes	2017	New	

<b>Catwalks / Gangways</b>							
#	From Struc.	To Struc.	Length / Style	Built	Safety Chains	Cond.	Lighting
CI	Dock	NI	70' / Catwalk / Galvanized pony-truss	2017	Yes	New	None

<b>Terminal Projects</b>			
Year	Project #	Project Name	Description
2017	Z674740000	Chignik Public Dock	Constructed new sheet pile bulkhead dock with five berthing fenders along the front face and one mooring dolphin north of the dock.

### GENERAL FACILITY EVALUATION

Facility Component	Rating
Uplands	7
Sheet pile Dock	9
Dolphin	9
Fendering System	9

9	EXCELLENT CONDITION
8	VERY GOOD CONDITION - no problems noted
7	GOOD CONDITION - some minor problems.
6	SATISFACTORY CONDITION - structural elements show minor deterioration
5	FAIR CONDITION - all primary structural elements are sound but may have minor corrosion, cracking or chipping. May include minor erosion on bridge piers.
4	POOR CONDITION - advanced corrosion, deterioration, cracking or chipping. Also significant erosion of concrete bridge piers.
3	SERIOUS CONDITION - corrosion, deterioration, cracking and chipping, or erosion of concrete bridge piers have seriously affected deck, superstructure, or substructure. Local failures are possible.
2	CRITICAL CONDITION - advanced deterioration of deck, superstructure, or substructure. May have cracks in steel or concrete, or erosion may have removed substructure support. It may be necessary to close the bridge until corrective action is taken.
1	"IMMINENT" FAILURE CONDITION - major deterioration or corrosion in deck, superstructure, or substructure, or obvious vertical or horizontal movement affecting structure stability. Bridge is closed to traffic but corrective action may put back in light service.
0	FAILED CONDITION - out of service - beyond corrective action
N	Not applicable

For a copy of the latest facility inspection reports contact the AK DOT&PF Marine Design Department. Contact information is located in the Comments and Feedback section.